

REGENT'S

TM102-120

ONE-SHOT/RETRIGGERABLE/REPEAT CYCLE TIMER

Features

- 6-in-1 Timer; 3 Functions (One-Shot, Retriggerable, Repeat Cycle) each with 2 modes of operation (On-Off, Off-On).
- Logic and load flexibility. Compatible with PLCs, sensors, solenoids, contactors and more
- Complete isolation between line, load, and logic circuits.
- Compact size. DIN rail or panel mount.
- LED load and logic indicators.
- Regent's 2 Year Warranty.

Ideal for:

- ▶ Hot melt glue control
- ▶ Faulty part ejection
- ▶ Conveyor jam control
- ▶ Positioning systems
- ▶ Pump control
- ▶ Life cycle testing
- ▶ Automatic lubrication
- ▶ Vibratory feed



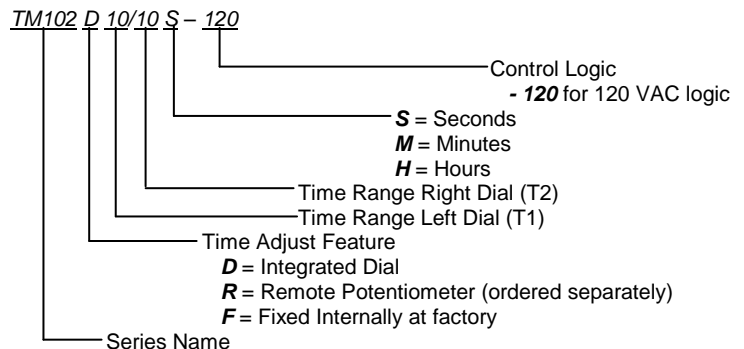
Our most popular two-dial timer for AC control systems offers excellent repeatability and flexibility. No need to worry about programming—just set it and go!

Three operating modes let you select One-Shot, Retriggerable or Repeat Cycle operation. You can also select ON-OFF-ON or OFF-OFF-ON operation.

The popular Delayed One-Shot mode is used for glue control, parts ejection and positioning systems. Built-in dials or optional remote adjustment makes setting time delays easy.

The solid-state output switch is designed to control industrial loads or logic inputs.

PART NUMBER BUILDER



FOR MORE INFORMATION CALL 203-732-6200
OR VISIT US ONLINE AT www.regentcontrols.com



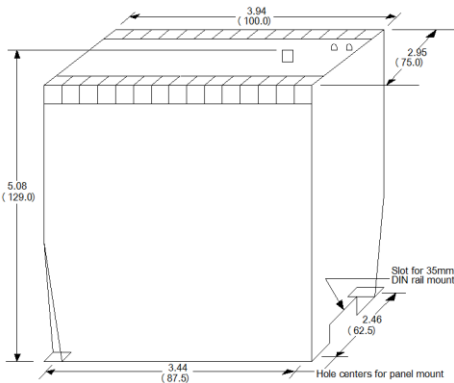
e-mail: sales@regentcontrols.com



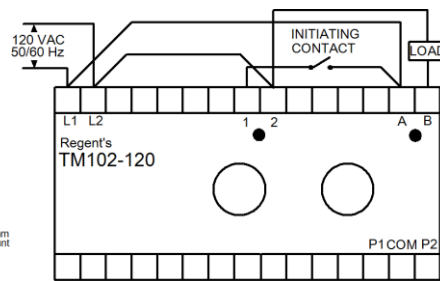
Regent's TM102-120

One-Shot/Retriggerable/Repeat Cycle Timer

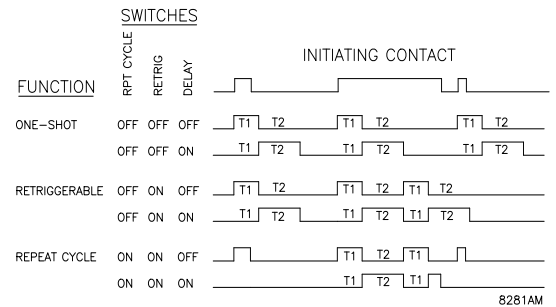
DIMENSIONS



WIRING DIAGRAM



TIMING DIAGRAM



OPERATION (refer to TIMING DIAGRAM)

1. *One-Shot Operation:* Repeat Cycle switch OFF, Retrig switch OFF:

When timer is triggered by signal on 1,2, reapplying trigger signal has no effect until time intervals T1 (left dial) and T2 (right dial) have been completed.

2. *Retriggerable Operation:* Repeat Cycle switch OFF, Retrig switch ON:

If trigger signal is present on 1,2 when interval T2 (right dial) ends, time intervals T1 and T2 will be repeated. When trigger signal is removed, remainder of cycle is completed, then output turns off.

3. *Repeat Cycle Operation:* Repeat Cycle switch ON, Retrig switch ON:

Timer cycles from T1 to T2 as long as trigger signal is present on 1,2. When trigger signal is removed, output turns off and cycle stops.

4. *Delay OFF/ON:*

With Delay switch OFF, load is ON during T1 (left dial) and OFF during T2 (right dial).
With Delay switch ON, load is OFF during T1 (left dial) and ON during T2 (right dial).

NOTES

- Specify Remote option ('R' time adjust feature, see part number builder) if time adjustment potentiometers are to be mounted away from timer. Remote option can be supplied on both time ranges (T1 and T2) or on one side only.
Connect remote T1 potentiometer to terminals P1,COM.
Connect remote T2 potentiometer to terminals P2,COM.

SPECIFICATIONS	TM102-120
Line Input (L1,L2)	120 VAC +/- 20%, 50/60 Hz
Logic Input (1,2)	120 VAC, 25 mA burden (will not operate on leakage current below 10 mA)
Load Rating (A,B)	
Voltage	120 VAC +/- 20%
Current	2 A continuous; 5 A inrush
Off-state leakage	less than 2 mA
On-state voltage drop	1 VAC typical at rated current
Minimum load current	15 mA
Recommended fuse	Littelfuse 322005
Timing	
Time range (minimum time)	0.5 sec (25 msec) 10 sec (100 msec) 5 min (3 sec) 2 hrs (72 sec)
(other ranges available. T1 & T2 may be different.)	1 sec (40 msec) 50 sec (0.5 sec) 20 min (12 sec) 4 hrs (144 sec)
	5 sec (50 msec) 100 sec (1 sec) 100 min (60 sec)
Repeat accuracy	+/- 0.5% of dial setting
Calibration accuracy	+/- 5% of time range with 1% settability
Minimum initiate time	16 msec
Temperature	0 to 65°C (32 to 149°F)

FOR MORE INFORMATION CALL 203-732-6200



e-mail: sales@regentcontrols.com



OR VISIT US ONLINE AT www.regentcontrols.com